

HEADSIGHT™ INC.



harvesting solutions

Installation Guide

for JD600R Add-on Sensor Kit

#XW1JD63-31Q

Note: For this center sensor kit to function, you **MUST** have a 2004 or newer header control board as well as software version 5.0 or newer in your Header Control Unit. A JD technician can update the software in all 60 series (and some 50 series) machines to the required version using Service Advisor (April 2005 or later) in ½ hour or less.

- 1.) Set header stop before working under header!



- 2.) Remove the center skid plate.

Note: This skid is heavy and may require assistance for safe removal.



- 3.) Remove the 3 pin Weather-Pac connector with a pin-pushing tool (see instructions under “Removing the 3 Prong Weather-Pac”). Tape the pins with electrical tape to prevent damage.

4.) Carefully route the PFC17 wiring harness from the rear of the header to the location of the sensor. CAREFUL ROUTING IS ESSENTIAL. Start at the rear of the header and feed the 3 loose Weather-Pac pins as shown in the following steps, keeping the Amp (round 4 pin) connector at the rear of the head near the multipoint connector.

- a. Feed the wire through the two small holes over the brace.
- b. Bring the wire through the open area above the skid plate.



- c. Exit through the cutterbar adjustment slot. Secure with zip ties to prevent movement.



- d. Reinstall the 3 pin Weather-Pac end.
 - Pin A – Black
 - Pin B – White
 - Pin C – Green

5.) Reinstall the skid plate. Install the sensor in the location shown. Remove three carriage guard bolts and mount using the 3/8" cap screws provided.

a. Secure the front of the harness in the slot between the skid plates.



b. Secure the rear of the harness with included harness clamps and zip-ties.

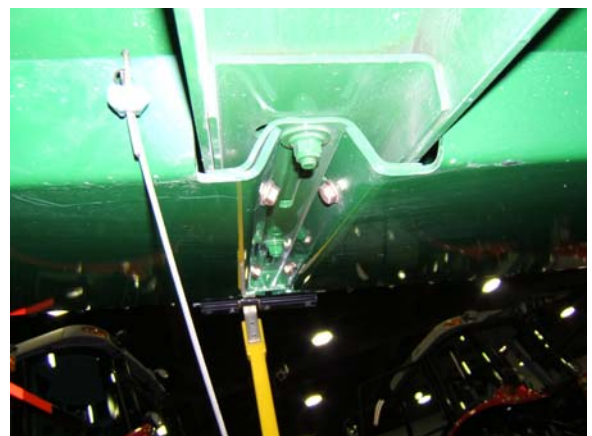


6.) Install the polyurethane paddle to the sensor using 5/16" bolts provided (not shown).

a. Attach the cable to the rear end of the paddle by inserting the looped end in the slot. Pry the slot open with a screwdriver.

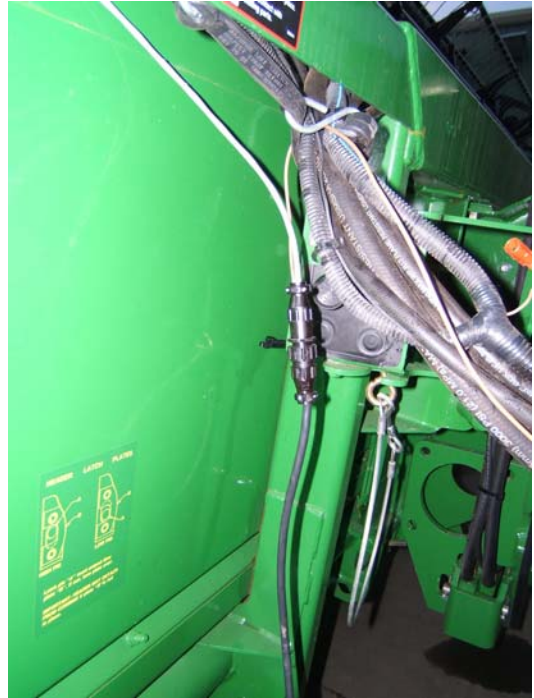


b. Attach the rear of the cable to the header with the cable clamp. Proper adjustment is to pull the cable to just *start to raise* the rear of the paddle.



7.) Install harness XW1JD63-31Q on the rear of the header as shown in the following steps.

a. The Amp (round 4 pin) connector should stay near the single-point connector for connection with the PFC17 cable from the sensor.



b. Route the long end (with two 3 pin Weather-pac connections) to the left end of the header under the frame rail. Insert this “Y” into the 3 pin connection there (that runs to the left sensor).



c. Carefully slice the heat-shrink over the connector on the back of the single-point connection. Take care to not damage the insulation on any wires.



d. Route the tan wire along the existing header wiring harness up to the header connector. Tuck the wire into the wire loom and secure as needed with electrical tape.



- e. Remove the white plastic plug from pin #3 (pins are numbered on both faces of the orange rubber). Insert the tan wire into pin #3.



- f. Reseal the connector with electrical tape.



- 8.) Perform Combine Quick-Cal procedure (described in operators manual).

- 9.) Install covers on the sensor.

