



HEADSIGHT® CORN SENSOR INSTALLATION FOR AGCO COMBINES.

Installing Sensors on AGCO Poly Outer Rows.....	2
Wiring	4
Control box attachment	6
Combine Calibration	6
Parts and Wiring Breakdown	7
Warranty	8

Printed in the U.S.A

Headsight, Inc. 3529 Fir. Rd Bremen, IN 46506 PH: 574.546.5022

More info at www.headsight.com U.S Patent # 6202395 & Foreign Patents Pending



!!!!CAUTION!!!!!!

When working under the header be sure to

- 1) Lock combine header hydraulics to the header can not fall.
- 2) Turn off combine and remove key from ignition
- 3) Set parking brake.



All references for front and rear, left-hand (LH) and right-hand (RH) are taken as sitting in the operator's seat.

Tools needed

- Power drill (preferably cordless)
- Drill bits
- 15mm socket, extension and ratchet
- Safety glasses

Installing Sensors on AGCO Poly Outer Rows

- 1) Remove steel skid plate at the front of the outer row.



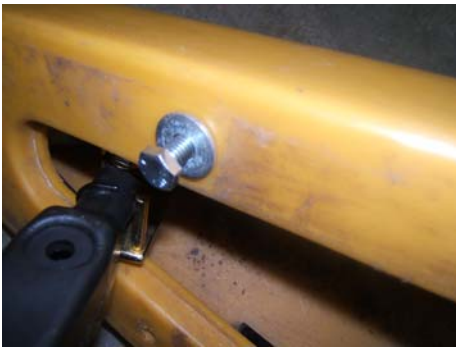
- 2) Secure Headsight® sensor to the HT2227 “U” shaped bracket



3) Slide HT2227 bracket into the snout with sensor attached.

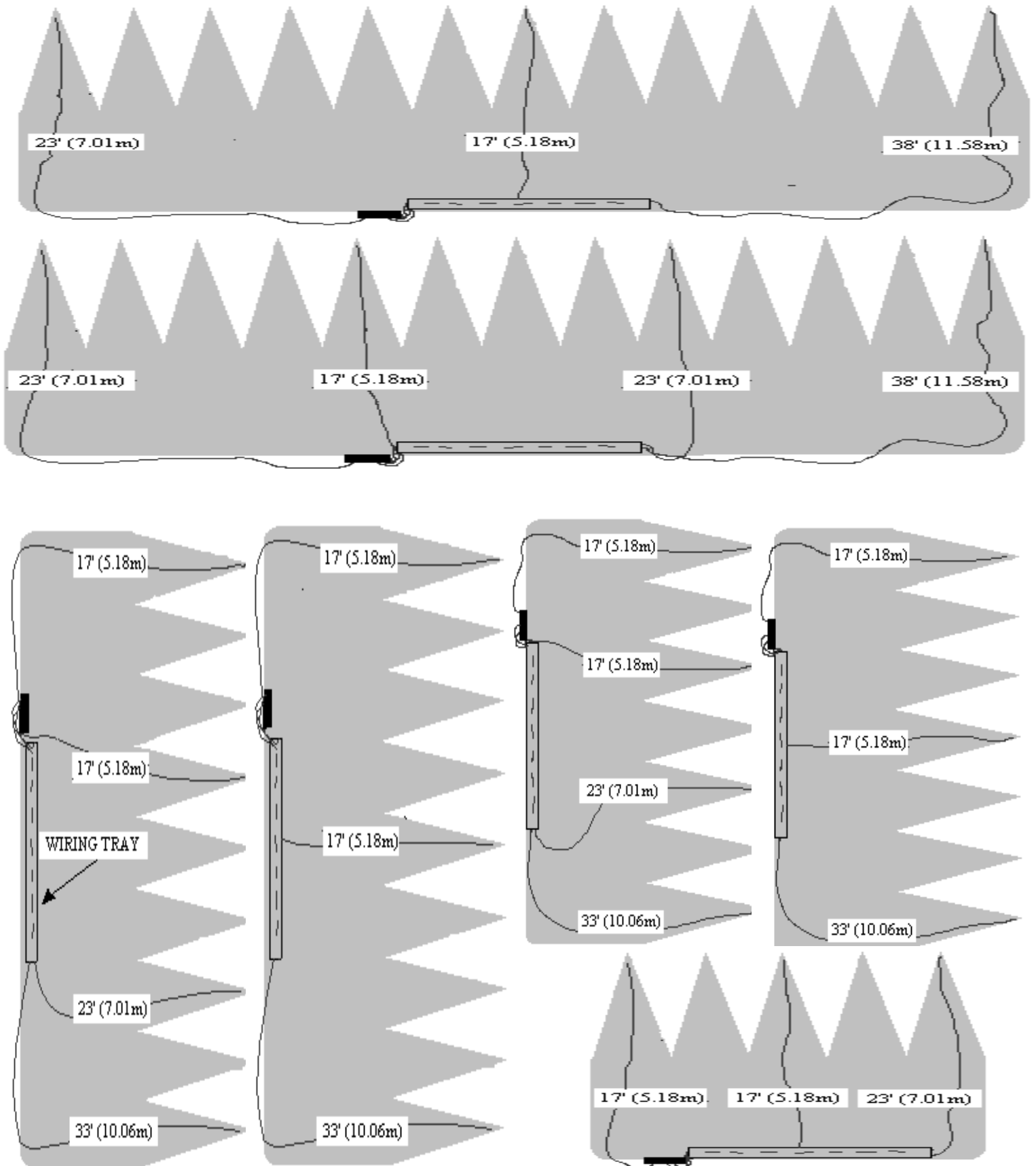


4) Secure bracket to the snout.



Wiring

30" Row Wiring Configurations



***** Important **** This is a very vital part of the installation process. If there is too much slack or the wiring is too close to moving parts the harness could be damaged or cause short circuiting. If too little slack snouts cannot move as they are supposed to. Each header is a bit different, so use the pictures provided and some good ol' common sense to secure the wiring.*

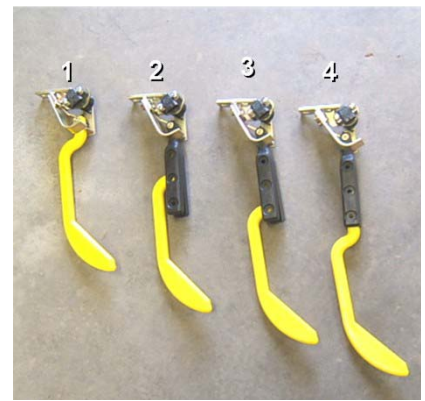
All sensor wiring is to be ran to the back left side of the header to the left side of the feeder house hook up.

Outer Rows

- 1) Lay out each of the wiring harnesses under their respective snouts.
- 2) Attach the three prong connector to the three prong potentiometer. Make sure connection is square and all pins engage properly. Gently but firmly push until you hear or feel a slight “click.”
- 3) Attach the initial cable clamp approx 6” behind the sensor leaving 1/2” slack in the cable using screws and clamps provided.
- 4) Continue to secure the harnesses using the cable clamps.
- 5) Lifting the snout up will show the full extension of the snout. The closer you secure the wiring harness to the hinge point the less slack is needed.
- 6) From the right side of the header run the wiring down the back of the header. Then use the wiring cover under the header to run wiring to the left side of header. Use zip ties when necessary
- 7) All wiring harnesses should meet at the back of the header just to the left of the feeder house hook up.

Extension Settings

- Attach the poly arms to the sensors at desired height using the bolts nuts and washers from the bolt kit labeled BEX.
- Position 4 is for standing crop, and is the least sensitive.
- Position 1 is for severe down corn and the most sensitive.
- For most fields we recommend position 2 setting
- Each setting allows the header to run approximately 2 inches higher.



Control box attachment

If you have a late model combine or have more than 3 sensors you will have a control box.

- 1) Secure the control box to the back of the header just to the left of the feederhouse hook up.
- 2) Mount the control box with connection points down to protect them from debris and water
- 3) Secure the box by marking the 4 holes then drilling them out with a 1/4" drill bit.
- 4) Run tie straps through the holes to secure the box on the header.



Routing the light bar

Route the light bar cable up LH side of feederhouse and secure away from moving parts.

At LH top of feederhouse, secure to cables with tie strap and route wiring in the cab door under the mat and to the RH side of cab,

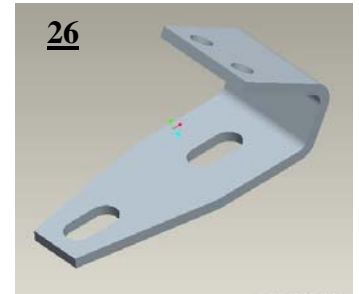
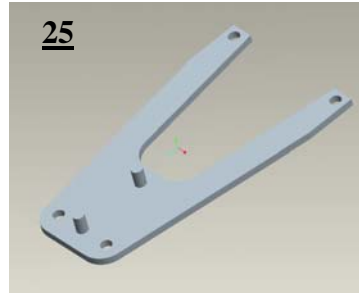
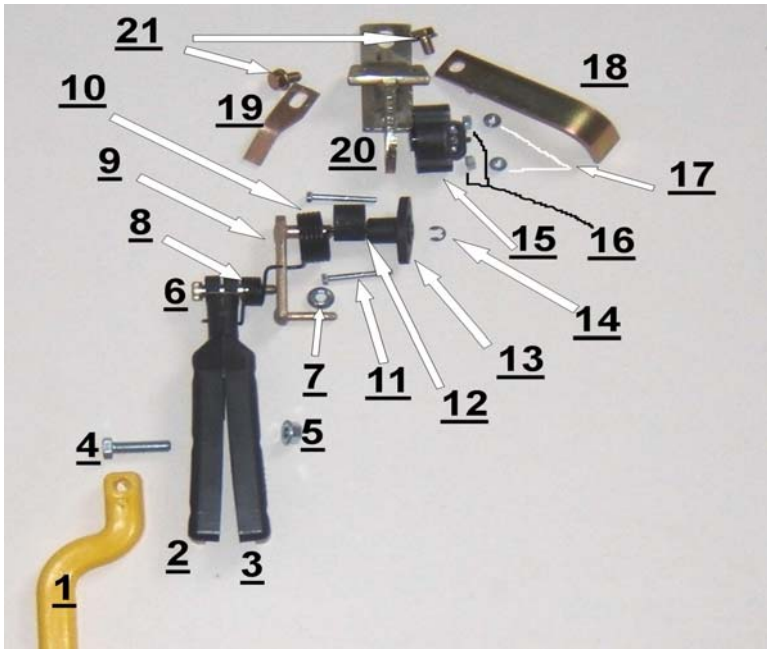
Secure light bar with two screws within easy reach of the operator.

Combine Calibration

- Calibrate combine as per combine operator's manual.
- If you have more than 2 sensors your center sensors are feeding into the right and left sensor inputs of the combine. For trouble shooting the center sensor you will need to unplug the right and left sensors from the control box.



- Parts and Wiring Breakdown



US PRICE	KEY	PART NO.	DESCRIPTION	QTY	REMARKS
27.50	1	HT2113	POLY ARM	1	polyurethane-available in Yellow, Red, or Black (HT777Y,HT777R, HT777B) Formerly HT777X
11.20	2 and 3	HT2117	EXTENSION SET	1	
	4	FA13108	3/8-16x1 3/8	1	
	5	FA1137341	3/8-16 FLNG	1	
				1	
4.30	6	FA26332	SHOLDER BOLT	1	5/16 Bolt
	7	FA1137339	NUT	1	5/16 Flange locking
8.25	8	HT2110	SPRING	1	Old number = HT556
32.45	9	HT2106	PIVOT BRACKET	1	Old number = HT121
14.25	10	HT2111	SPRING	1	Down pressure spring
1.05	11	FA38549	BOLT	2	8.8(grade 5) M5-.8 X 50 mm (cut down from19M7664) (Old Number = HT222)
5.50	12	HT2116	SPRING BUSHING	1	.
27.50	13	HT2112	PIVOT BUSHING	1	Poly (Old bushing = HT334) Includes seal and bronze bearing
	14	CH11489	SNAP RING	1	Also may substitute-*40M7161 or *40M7040
71.50	15	HT9810-720	POTENTIOMETER	1	potentiometer – 5k ohms(May also substitute* RE30295*)
	16	14M7272 *	NUT	2	6MM (spacer use only, eases in wrench access when adjusting)
17.00	17	14M7375 *	NUT	2	5MM X .8MM FA10420-01729
12.65	18	HT2122	SHIELD	1	For sensor and wiring protection. (Old number = HT141)
	19	HT2105	STOP	1	Shaft angle adjustment in free hanging position (Old number = HT161)
71.50	20	HT2100	MOUNT BRACKET	1	Threaded holes are 10mm x 1.2mm & 8mm x 1.0mm (Old number = HT101)
	21	19M7864 *	BOLT	2	10.9(grade 8)M8-1.0 X 12 mm flange head
38.50	24	19M7557 *	BOLT	1	Attaching bolt M10x15, uses 14M7296 M10 flange nut.
38.50	25	HT2227	BRACKET	1	Bracket for AGCO poly
	26	HT2224	J BRACKET	1	J Bracket for Universal Mount
250.00	27	HC2-AG13-XX	Wiring Harness	11	Not pictured
22.00	29	PFC10	WIRE- 10'	1	Used on center sensor connect. under auger to 50 and 60 series wiring Used on outer sensors as extensions from 50 series head wiring 204" } 276" } FOLLOW CHART FOR ROW USEAGE LENGTH 396" } & COIL UP EXCESS WIRE AT CONTROL BOX 456" }
24.00		PFC15	" -15'	1	
49.00		PFC17	" -17'	1	
55.00		PFC23	" -23'	1	
60.00		PFC33	" -33'	1	
66.00		PFC38	" -38'	1	
	30	R77464 *	Amp style connector	3	Male pin
		R77465 *		3	Female pin
	31	R78058 *	Weatherpack connector	3	Male pin
		R78059 *		3	Triple lip seal(green)
		RE12364 *		1	Male 3-pin black plastic Weatherpack terminal housing
650.00		HC3-JD10-XX	DAM Control Box	1	Used with all DAM combines.



Statement of Limited Warranty For Corn Products

Statement of Limited Warranty for Corn Products

Headsight Inc. (Headsight) warrants its new corn sensors assemblies for a period of thirty-six (36) months, and its electronic wiring and interface control boxes for a period of twelve (12) to be free from defects in material and workmanship following the date of purchase by the retail purchaser.

Headsight warrants genuine Headsight replacement parts and components to be free from defects in material and workmanship for a period of six (6) consecutive months following the date of purchase or the remainder of the original equipment warranty period, whichever is longer.

Headsight's obligation under these warranties shall be limited to repairing or replacing, free of charge to the original purchaser, any part that, Headsight's judgment, shows evidence of such defect.

Limitations to Warranty

This warranty does not cover:

- Warranty claims directly resulting from improper installation of the product.
- Any product damaged by accident, abuse, misuse, or negligence after shipment from Headsight.
- Any unauthorized product alteration or modification.
- Any unauthorized repairs made with parts other than genuine Headsight parts.
- Any repairs performed by anyone other than Headsight or an authorized Headsight dealer unless specifically authorized by Headsight.

Warranty Procedure

- Troubleshooting should be done between farmer/dealer and Headsight through our technical assistance @ 574.220.5511.
- Labor reimbursement will occur only pre-arranged through Headsight technical assistance and be scheduled to a flat rate basis or reasonable time allowance in Headsight's judgment.
- There is no mileage reimbursement.
- Diagnostic time will not be reimbursed except in pre-arranged circumstances.
- Warranty claims should be on typical dealer service work order with a number and name to be attached for any future correspondence.
- All warranty work must be performed, and claims submitted, within sixty (60) days of the occurrence of the claim and within the warranty period.
- All parts removed during warranty repair should be held for a period of 60 days after the warranty claim has been submitted to Headsight.
- Headsight, Inc. reserves the right to either inspect the product at the original retail purchaser's location or require it to be returned to Headsight, Inc. for inspection.

Limitation of Liability

Headsight makes no express warranties other than those, which are specifically described herein. Any description of the goods sold hereunder, including any reference to buyer's specifications and any descriptions in circulars and other written material published by Headsight is for the sole purpose of identifying such goods and shall not create an express warranty that the goods shall conform to such description.

THIS WARRANTY IS EXPRESSLY IN LIEU OF ALL OTHER WARRANTIES EXPRESSED OR IMPLIED. There are no implied warranties of merchantability or fitness of a particular purpose. This warranty states Headsight's entire and exclusive liability and buyer's exclusive remedy or any claim for damages in connection with the sale of furnishing of Headsight products, their design, suitability for use, installation or operation, or for any claimed defects herein. **HEADSIGHT WILL IN NO EVENT BE LIABLE FOR ANY INCIDENTAL OR CONSEQUENTIAL DAMAGES WHATSOEVER, NO FOR ANY SUM IN EXCESS OF THE PRICE RECEIVED FOR THE GOODS FOR WHICH LIABILITY IS CLAIMED.**

No representative of Headsight nor any dealer associated with Headsight has the authority to change the items of this warranty in any manner whatsoever, and no assistance to purchaser by Headsight in the repair or operation of any Headsight product shall constitute a waiver of the conditions of this warranty, nor shall such assistance extend or revive it.

Headsight reserves the right to make improvements in design or changes in specifications at any time, without incurring any obligation to owners of units previously sold. Warranty: 10/2006