



Table of Contents

1 - Before You Start 2

2 Sensor Mounting 3

 2.1 Extension settings 3

 2.2 Narrow Rows (20"-22") 3

 2.3 Wide Rows (30"+) 3

3 Wiring 4

 3.1 Harness location guide 4

 3.2 Routing sensor harnesses 5

4 Parts List 7

5 Warranty 8

HEADSIGHT INC.
harvesting solutions

3529 Fir RD.
 Bremen, IN 46506
 Fax: 574.546.5760
 Phone: 574.546.5022
 E-mail: info@headsight.com
 Web: www.headsight.com



**HeadSight[®] Geringhoff
 Installation Manual**

1 - Before You Start -



- Perform all combine and header manufacturer safety precautions for servicing header
- Insert header mechanical safety lock
- Turn off combine
- Remove key from ignition
- Set combine parking brake



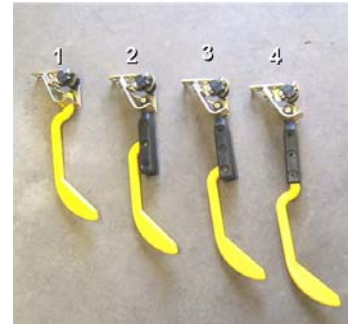
Expect 1 to 1-1/2 hours installation time per sensor.

Note: In this manual all references to front and rear, right and left assume from the point of view of the operators seat unless otherwise indicated.

2 Sensor Mounting

2.1 Extension settings

1. Attach the poly arms to the sensors at desired height using the bolts nuts and washers from the bolt kit labeled “Extension Hardware”
2. Position 4 is for standing crop, and is the least sensitive.
3. Position 1 is for severe down corn and the most sensitive.
4. Each setting allows the header to run approximately 2 inches higher.



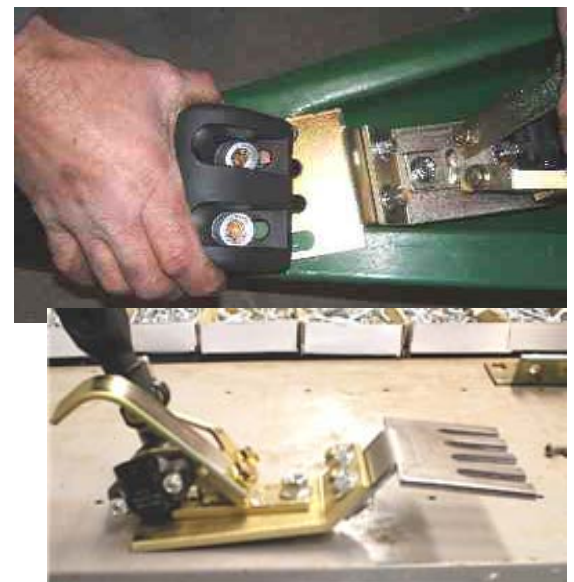
2.2 Narrow Rows (20"-22")

1. From rows that will receive sensors, take off two bolts that hold on the poly point. **Be sure not to drop the steel plate inside the snout.**
2. Place a bead of silicone on the steel plate, hand tighten the bolts to hold the plate in place. Let the silicone set up for 20-30 mins.
3. Carefully take off the bolts. You may need to hold the plate in place as you take off the second bolt.
4. Place sensor bracket with sensor attached between the poly snout point and the snout.
5. Secure sensor with bolts. Be careful not to lose or let the steel plate fall.



2.3 Wide Rows (30"+)

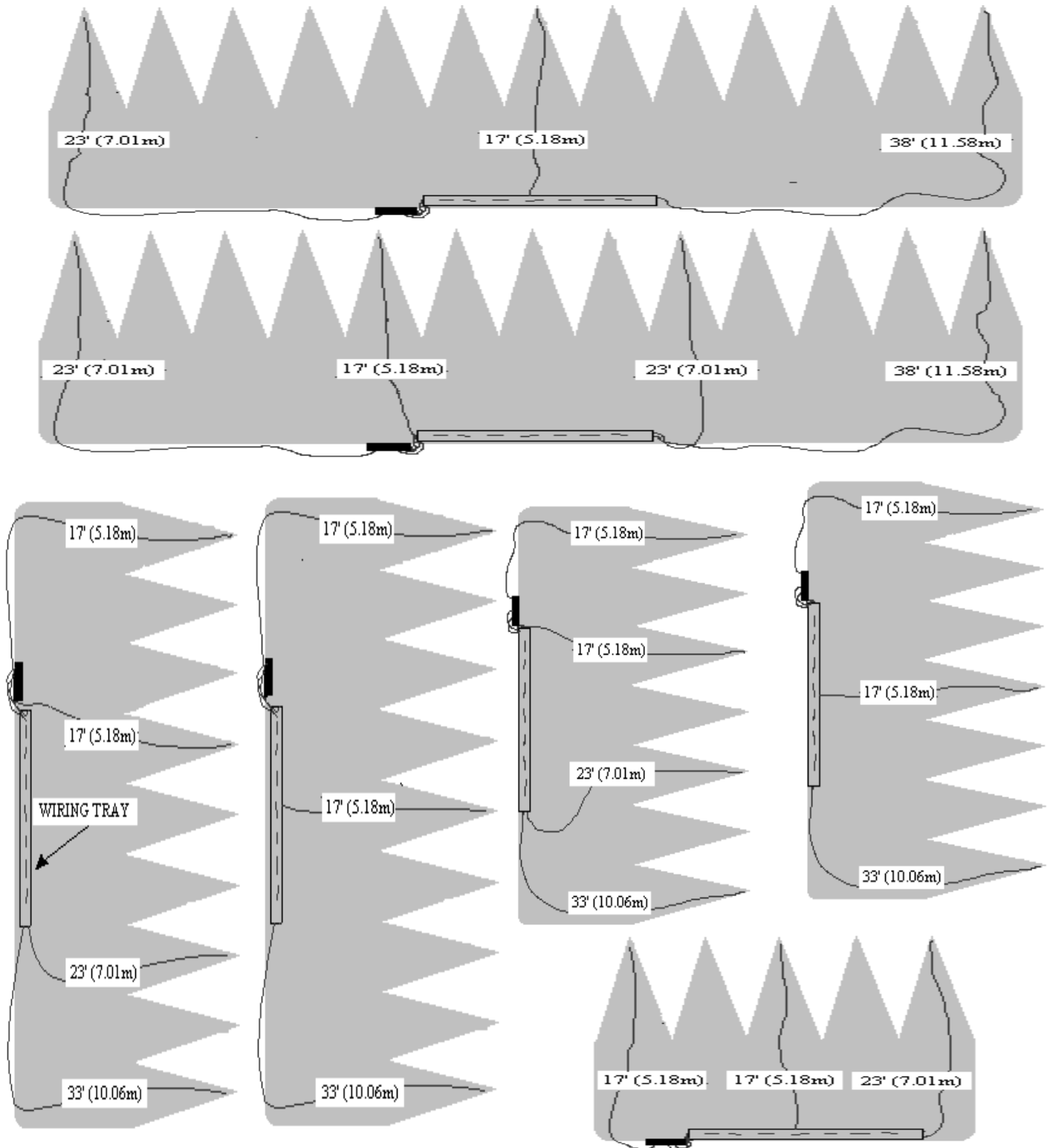
- 1) Connect the two brackets and the sensor as seen here.
- 2) From rows that will receive sensors, loosen but do not take off the two bolts that hold the poly point.
- 3) Insert sensor bracket keeping it square to the direction of travel.
- 4) Move the bracket as far forward as possible and securely tighten the bolts.



3 Wiring

3.1 Harness location guide

Note: 30" row spacing shown below. For other row spacings use diagram of similar length header. For example use 12 row 30" diagram for 18 row 20" header.



3.2 Routing sensor harnesses

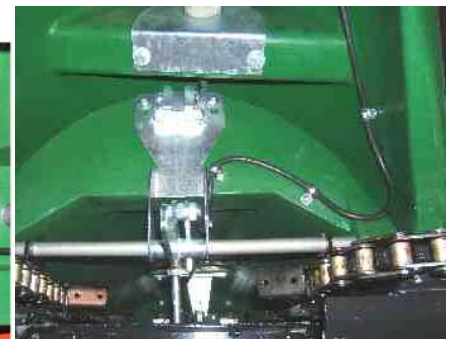
The objective here is to run the wiring to the combine/header hookup, for most combines that is the left hand side. Be cautious to keep away from moving parts and the ground.

- 1) Locate the appropriate length wire for each sensor. See “Wiring Guides” in the Headsight combine manual.
- 2) Attach the three prong connector to the three prong potentiometer. Make sure connection is square and all pins engage properly. Gently but firmly push until you hear or feel a slight “click.”
- 3) Place first cable clamp just behind and to the side of the sensor. Make sure the cable is off to the side and leave ½” slack
- 4) Continue securing wiring to the back of header. Be sure the wiring does not interfere with the movement of the poly sensor arm.
- 5) At hinge point leave sufficient slack for snoot to still flex up and down.



3.2.1 Outer Rows

- 1) Run the wiring on the outside edge of the snoot



3.2.2 Inner Rows

- 1) Complete instruction for general wiring section.
- 2) Run wiring to back of snoots as seen in pictures.
- 3) Drill out the existing hole to 1". Pass wiring through the hole. See pictures below.

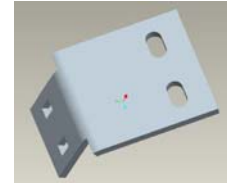
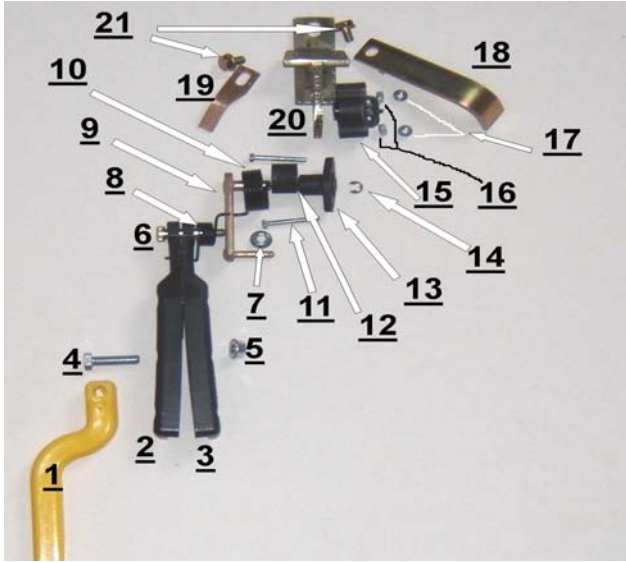


3.2.3 Finishing Up

- 1) Run all the wiring to the back left side of the feederhouse hookup (for most combines).
- 2) Secure excess wiring to header with straps.
- 3) Mount Headsight control box or header harness.
- 4) Calibrate as per combine operators manual



4 Parts List



US PRICE	KEY	PART NO.	DESCRIPTION	QTY	REMARKS
27.50	1	HT2113	POLY ARM	1	Black = HT2113B Yellow = HT2113Y
11.20	2 and 3	HT2117	EXTENSION SET	1	Formerly HT777X
	4	FA13108	3/8-16x1 3/8	1	
	5	FA1137341	3/8-16 FLNG	11	
4.30	6	FA26332	SHOLDER BOLT	1	5/16 Bolt
	7	FA1137339	NUT	1	5/16 Flange locking
8.25	8	HT2110	SPRING	1	Old number = HT556
32.45	9	HT2106	PIVOT BRACKET	1	Old number = HT121
14.25	10	HT2111	SPRING	1	Down pressure spring
1.05	11	FA38549	BOLT	2	8.8(grade 5) M5-.8 X 50 mm (cut down from 19M7664) (Old Number = HT222)
5.50	12	HT2116	SPRING BUSHING	1	
27.50	13	HT2112	PIVOT BUSHING	1	Poly (Old bushing = HT334) Includes seal and bronze bearing
	14	CH11489	SNAP RING	1	Also may substitute-*40M7161 or *40M7040
71.50	15	HT9810-720	POTENTIOMETER	1	potentiometer – 5k ohms(May also substitute* RE30295*)
	16	14M7272 *	NUT	2	6MM (spacer use only, eases in wrench access when adjusting)
	17	14M7375 *	NUT	2	5MM X .8MM FA10420-01729
17.00	18	HT2122	SHIELD	1	For sensor and wiring protection. (Old number = HT141)
12.65	19	HT2105	STOP	1	Shaft angle adjustment in free hanging position (Old number = HT161)
71.50	20	HT2100	MOUNT BRACKET	1	Threaded holes are 10mm x 1.2mm & 8mm x 1.0mm (Old number = HT101)
	21	19M7864 *	BOLT	2	10.9(grade 8)M8-1.0 X 12 mm flange head
49.00	29	PFB17	" -17"	1	For all black control boxes the harness includes item number 30. The harness part number changes to be a PFC17, 23.....).
55.00		PFB23	" -23"	1	
60.00		PFB33	" -33"	1	
66.00		PFB38	" -38"	1	
	30	R77464 *	Amp style connector	3	Male pin
		R77465 *		3	Female pin
	31	R78058 *	Weatherpack Connector	3	Male pin
		R78059 *		3	Triple lip seal(green)
		RE12364 *		1	Male 3-pin black plastic Weatherpack terminal housing
	32	HT12010717	Weatherpac Shroud	1	Need 3 sockets: 12089188 and 3 Green seals:12015323
19.25	33	HT2222	Geringhoff Bracket	1	Used with HT2231 or HT2221
19.25	34	HT2221	Geringhoff Bracket	1	Used with HT2222 on 20" and 22: rows.
19.25	35	HT2231	Geringhoff Bracket	1	Used with HT2222 on 30" rows and wider.

All pricing subject to change w/o notice. * = JD part number FA = Fastenal part number

5 Warranty

Statement of Limited Warranty for Corn Products

Headsight Inc. (Headsight) warrants its new corn sensors assemblies for a period of thirty-six (36) months, and its electronic wiring and interface control boxes for a period of twelve (12) to be free from defects in material and workmanship following the date of purchase by the retail purchaser.

Headsight warrants genuine Headsight replacement parts and components to be free from defects in material and workmanship for a period of six (6) consecutive months following the date of purchase or the remainder of the original equipment warranty period, whichever is longer.

Headsight's obligation under these warranties shall be limited to repairing or replacing, free of charge to the original purchaser, any part that, in Headsight's judgment, shows evidence of such defect.

Limitations to Warranty

This warranty does not cover:

- Warranty claims directly resulting from improper installation of the product.
- Any product damaged by accident, abuse, misuse, or negligence after shipment from Headsight.
- Any unauthorized product alteration or modification.
- Any unauthorized repairs made with parts other than genuine Headsight parts.
- Any repairs performed by anyone other than Headsight or an authorized Headsight dealer unless specifically authorized by Headsight.

Warranty Procedure

- Troubleshooting should be done between farmer/dealer and Headsight through our technical assistance @ 574.220.5511.
- Labor reimbursement will occur only pre-arranged through Headsight technical assistance and be scheduled to a flat rate basis or reasonable time allowance in Headsight's judgment.
- There is no mileage reimbursement.
- Diagnostic time will not be reimbursed except in pre-arranged circumstances.
- Warranty claims should be on typical dealer service work order with a number and name to be attached for any future correspondence.
- All warranty work must be performed, and claims submitted, within sixty (60) days of the occurrence of the claim and within the warranty period.
- All parts removed during warranty repair should be held for a period of 60 days after the warranty claim has been submitted to Headsight.
- Headsight, Inc. reserves the right to either inspect the product at the original retail purchaser's location or require it to be returned to Headsight, Inc. for inspection.

Limitation of Liability

Headsight makes no express warranties other than those, which are specifically described herein. Any description of the goods sold hereunder, including any reference to buyer's specifications and any descriptions in circulars and other written material published by Headsight is for the sole purpose of identifying such goods and shall not create an express warranty that the goods shall conform to such description.

THIS WARRANTY IS EXPRESSLY IN LIEU OF ALL OTHER WARRANTIES EXPRESSED OR IMPLIED. There are no implied warranties of merchantability or fitness of a particular purpose. This warranty states Headsight's entire and exclusive liability and buyer's exclusive remedy or any claim for damages in connection with the sale of furnishing of Headsight products, their design, suitability for use, installation or operation, or for any claimed defects herein. **HEADSIGHT WILL IN NO EVENT BE LIABLE FOR ANY INCIDENTAL OR CONSEQUENTIAL DAMAGES WHATSOEVER, NO FOR ANY SUM IN EXCESS OF THE PRICE RECEIVED FOR THE GOODS FOR WHICH LIABILITY IS CLAIMED.**

No representative of Headsight nor any dealer associated with Headsight has the authority to change the items of this warranty in any manner whatsoever, and no assistance to purchaser by Headsight in the repair or operation of any Headsight product shall constitute a waiver of the conditions of this warranty, nor shall such assistance extend or revive it.

Headsight reserves the right to make improvements in design or changes in specifications at any time, without incurring any obligation to owners of units previously sold. Warranty: 1/2007