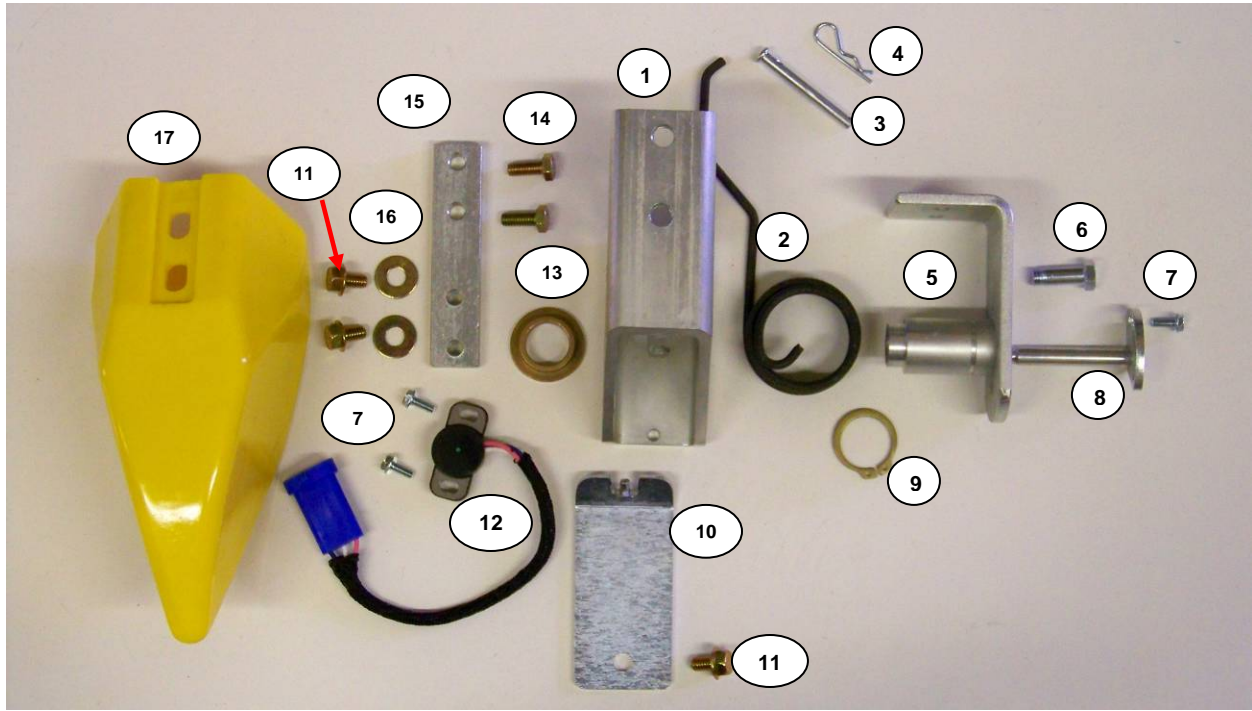


A Parts Information - Terrace Sensor



| Key# | Part# | Description | Qty | Notes |
|------|----------|-----------------------|-----|--|
| 1 | HT627 | BOX | 1 | |
| 2 | HT726 | SPRING | 1 | |
| 3 | 08100106 | PIN | 1 | DOWNPRESSURE ADJUSTMENT |
| 4 | 08100107 | CLIP PIN | 1 | |
| 5 | HT629 | ARM | 1 | |
| 6 | HT634 | BOLT, DOWN STOP | 1 | |
| 7 | 08200157 | 10-24 X 1/4" SCREW | 3 | |
| 8 | HT630 | SHAFT CALIBRATION | 1 | |
| 9 | 08100110 | RETAINING CLIP | 1 | |
| 10 | HT628 | COVER | 1 | |
| 11 | 08200150 | 5/16-18 X 1/2" | 1 | |
| 12 | HT2128 | HALL EFFECT SENSOR | 1 | |
| 13 | HT729 | BUSHING BRONZE | 1 | |
| 14 | 08200134 | BOLT 5/16 X 3/4 | 2 | |
| 15 | HT632 | STRAP DIVIDER | 1 | |
| 16 | 08200162 | WASHER 5/16 - 7/8OD | 2 | |
| 17 | HT631 | DIVIDER YELLOW POLY | 1 | |
| 18 | HT801- | WAND, SHORT | 1 | -Y = yellow, -B = black, -BU = blue |
| 19 | HT701- | WAND, LONG | 1 | -Y = ylw, -B = blk, -N = nylon, -BU = blue |
| | HT700 | COMPLETE SENSOR ASSY. | | |

